



HOUSE

Irpin, Gostomel highway, 22

📍 G7R8+M3

BEFORE THE WAR

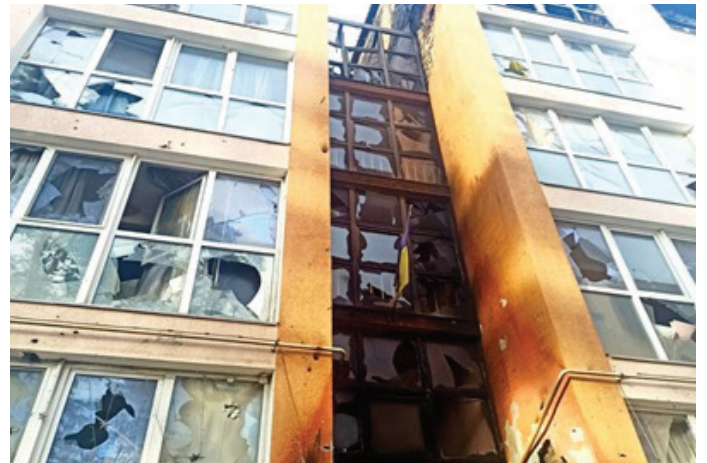
A residential multi-apartment 4-story building with an attic and a basement floor.

35 families lived there, among them 70% - young families with children, immigrants from the East who lost their homes for the second time, families of combatants, elderly and disabled people, disabled children.

AFTER THE RUSSIAN INVASION

The load-bearing and enclosing structures of the attic floor were damaged. There is no roof at all. On the 4th floor in adjacent apartments №26 and

№27 there are cracks of 1-2 mm on the walls. Complete burnout of apartments No. 29-35, on the 1st floor in apartments №2 and №3 in the partitions there are diagonal and horizontal cracks due to the deformation of the floor slabs, loss of bearing capacity in the basement floor slabs. Damaged interior decoration of apartments. Partial destruction of ventilation channels; damage to the window blocks of all facade walls, there are practically no window blocks, significant destruction of engineering networks, complete destruction of engineering networks on the attic floor.



The preliminary estimated cost is 270 000 €